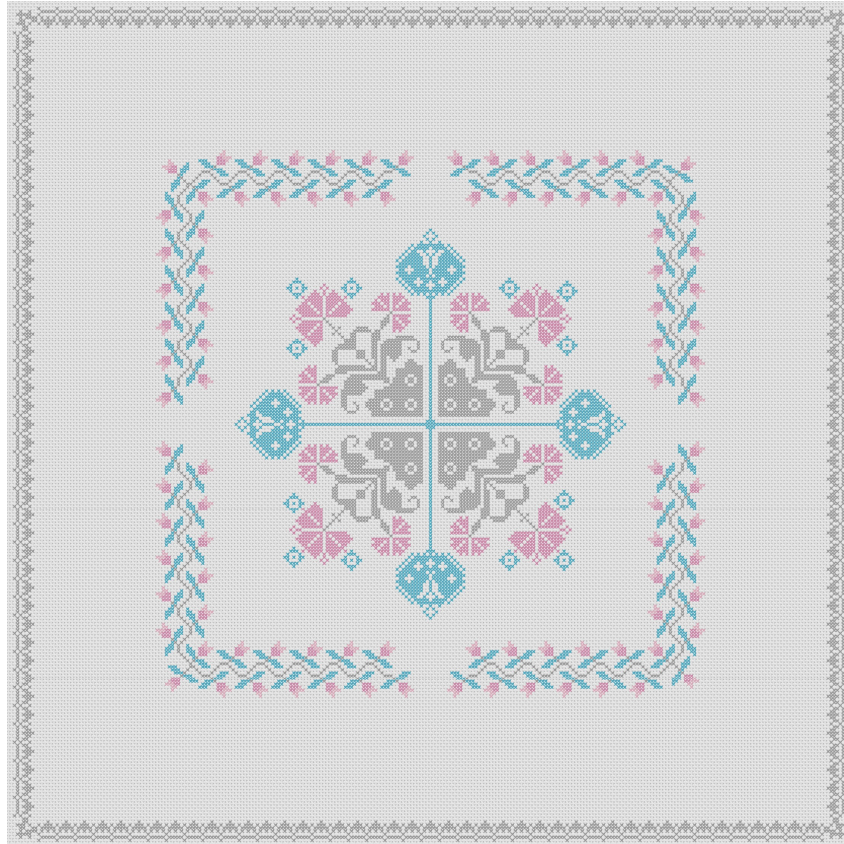


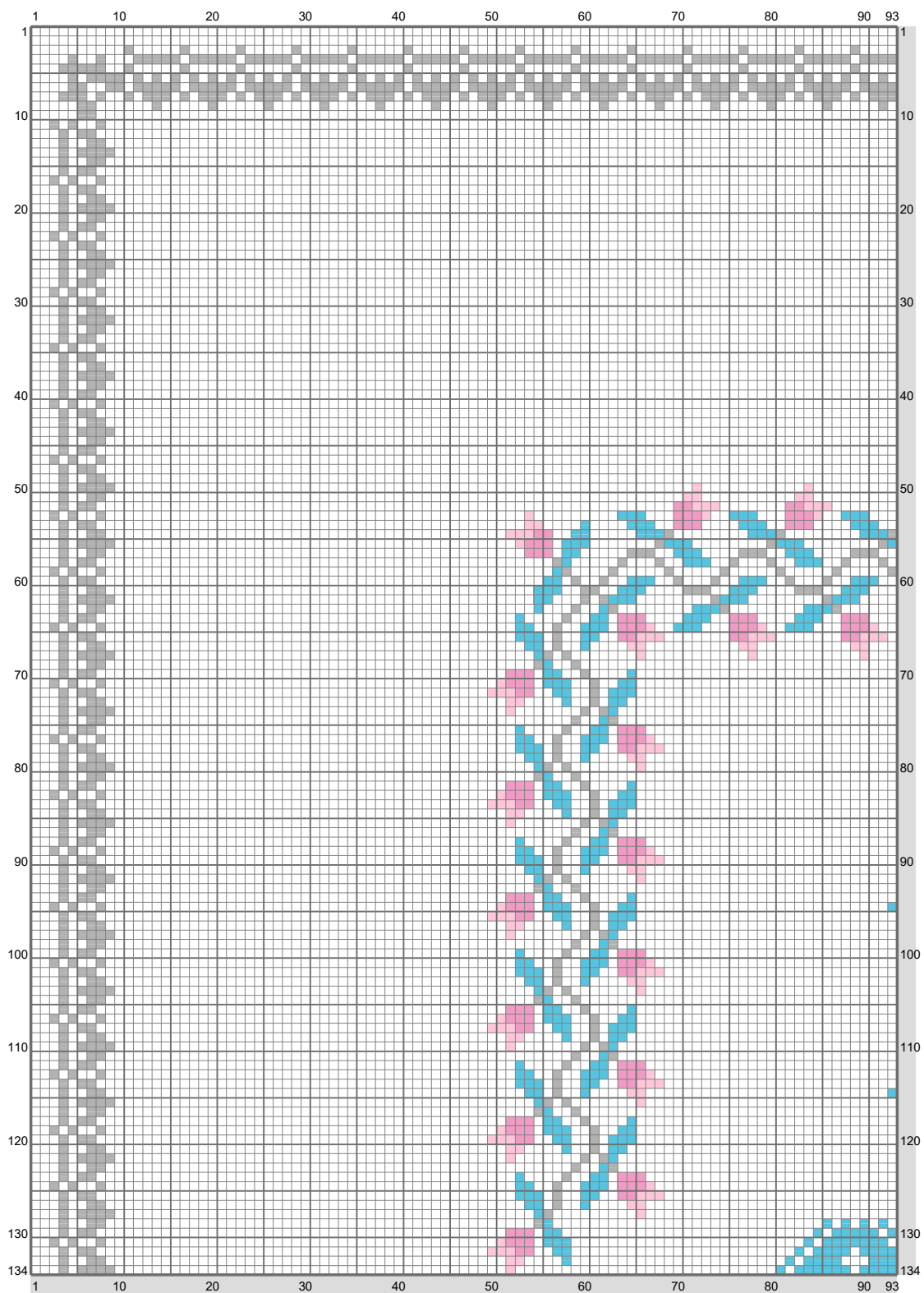
Large Biscornu, side 2

Copyright (C) 2018 Elise Nielsen



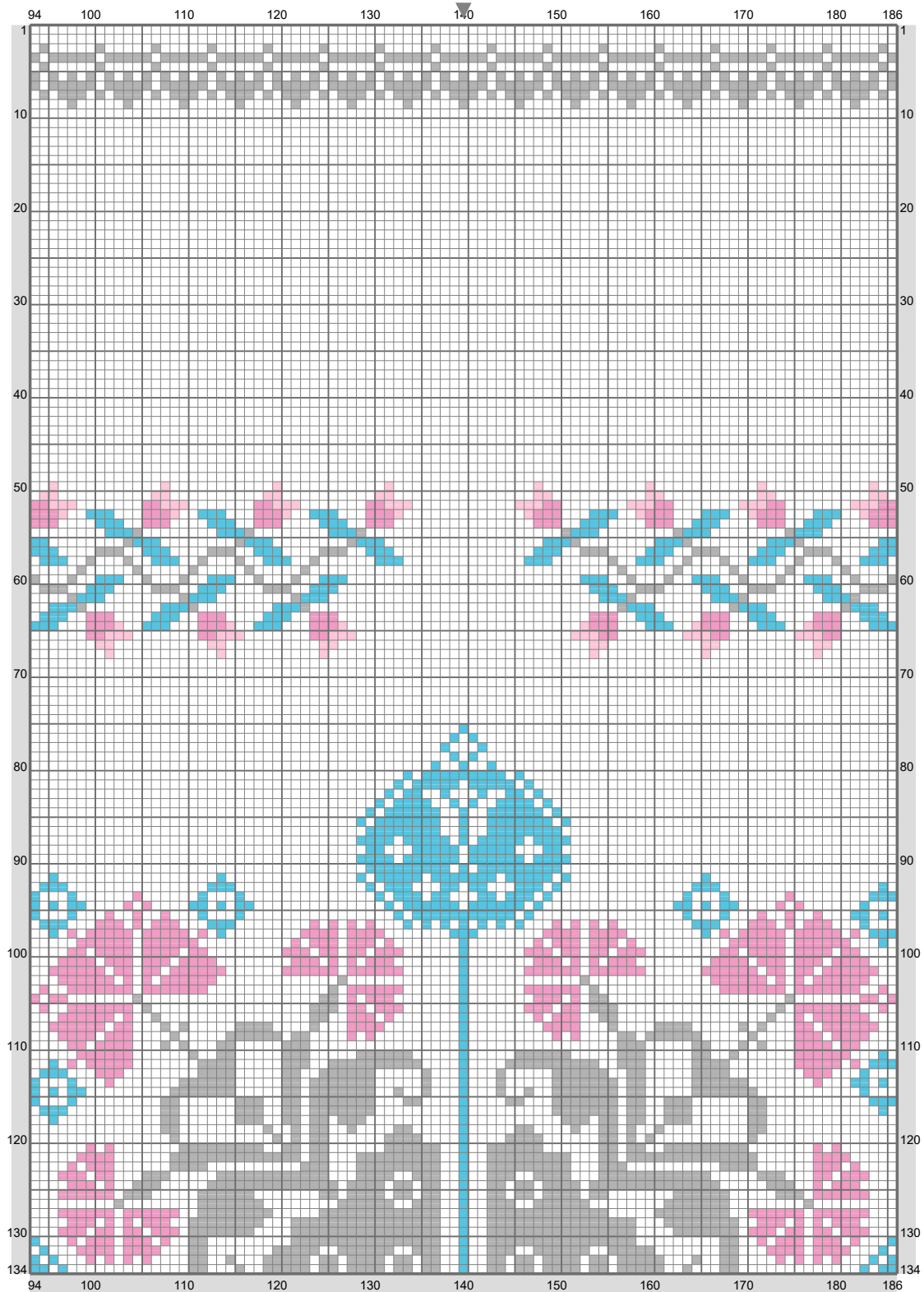
Large Biscornu, side 2

Copyright (C) 2018 Elise Nielsen



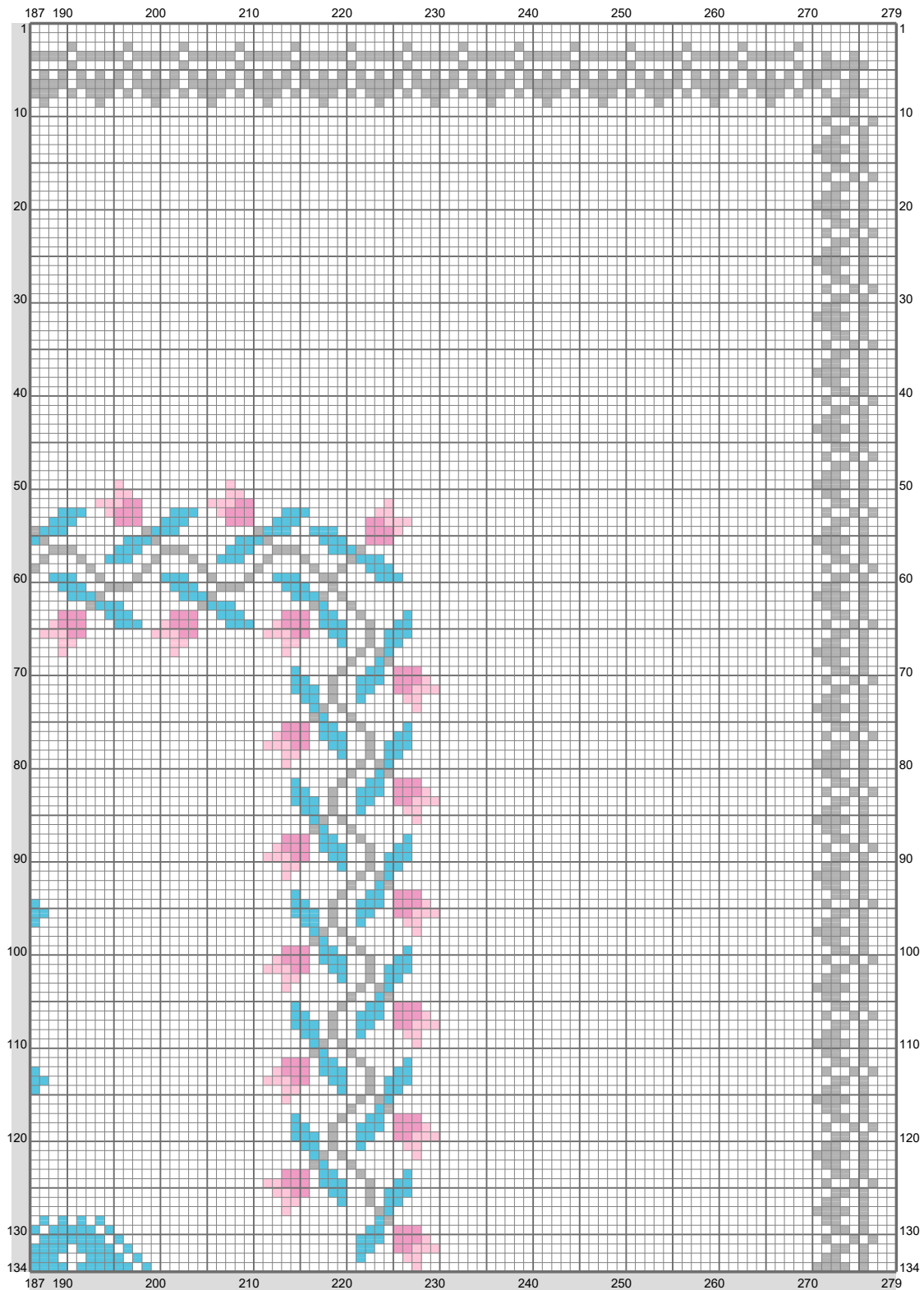
Large Biscornu, side 2

Copyright (C) 2018 Elise Nielsen



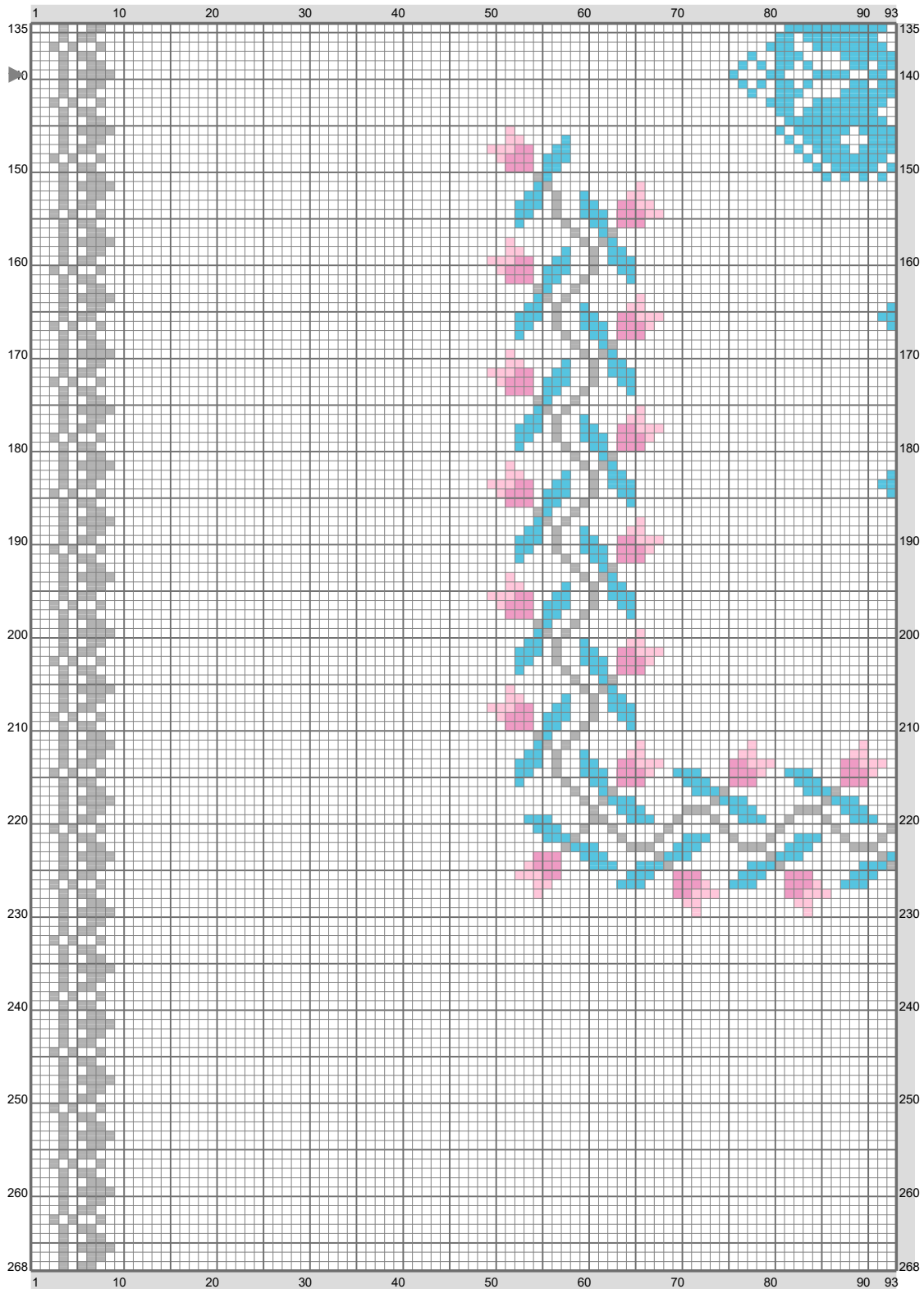
Large Biscornu, side 2

Copyright (C) 2018 Elise Nielsen



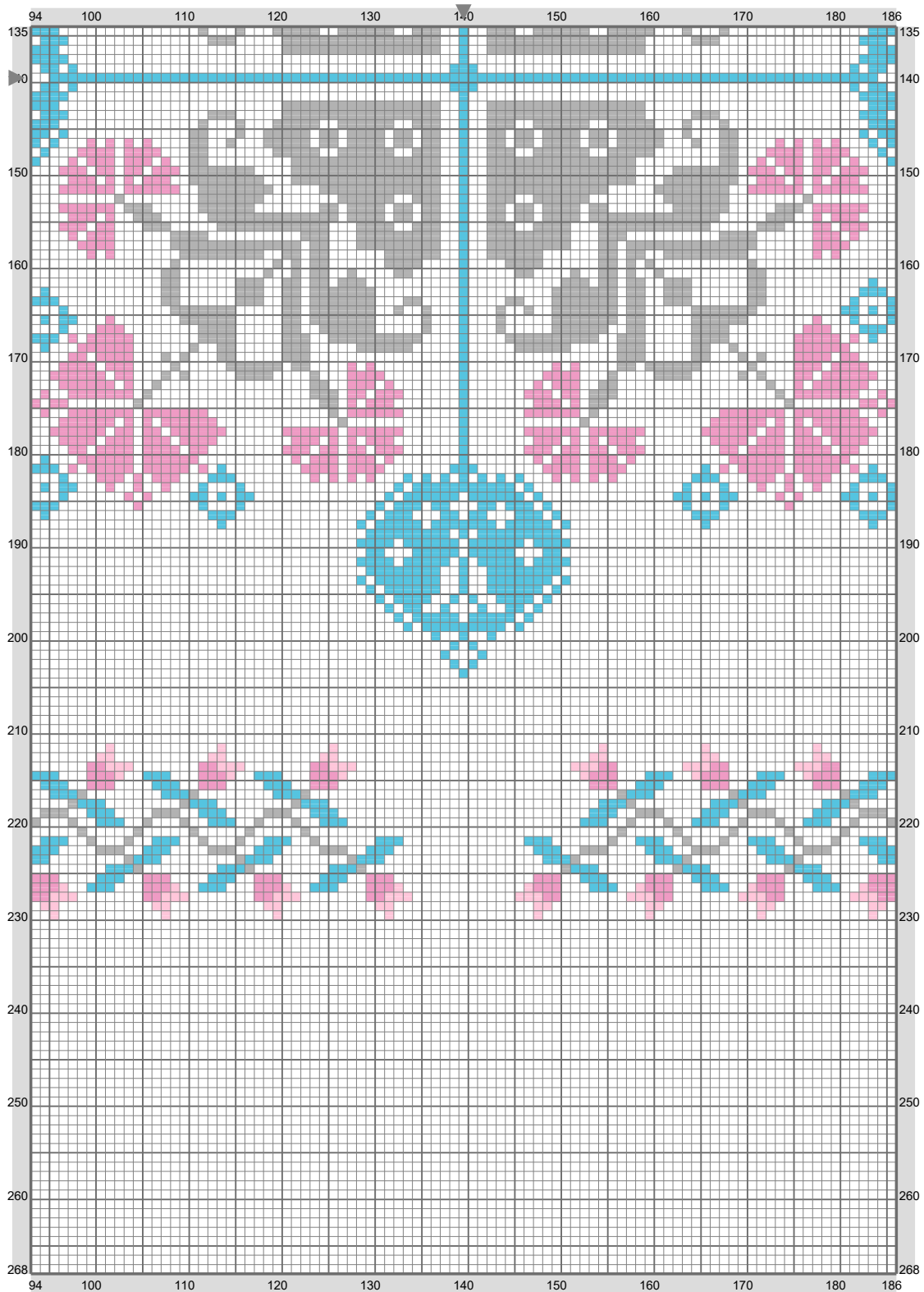
Large Biscornu, side 2

Copyright (C) 2018 Elise Nielsen



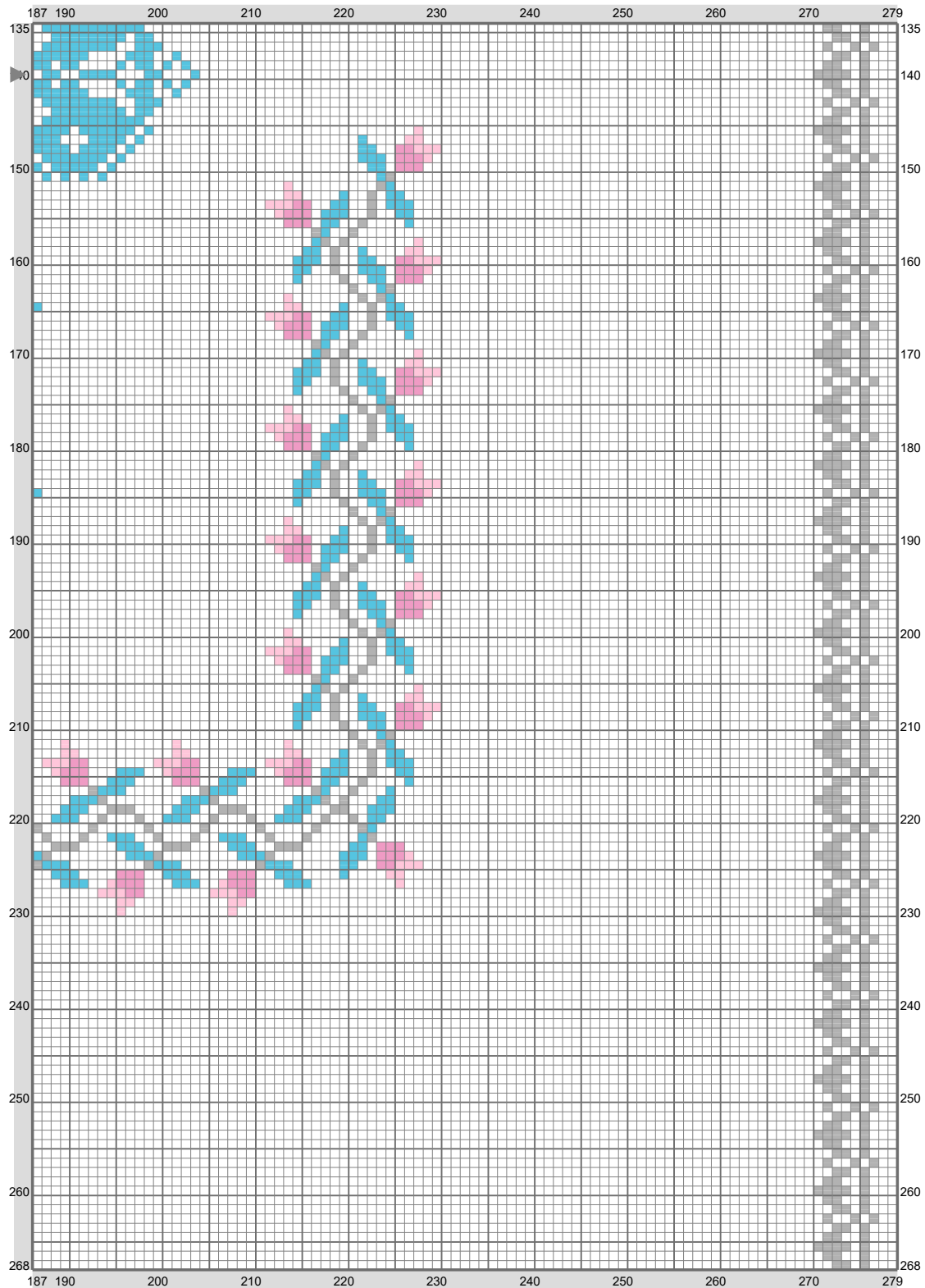
Large Biscornu, side 2

Copyright (C) 2018 Elise Nielsen



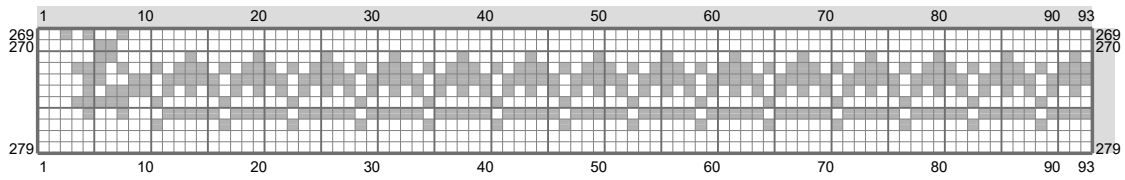
Large Biscornu, side 2

Copyright (C) 2018 Elise Nielsen



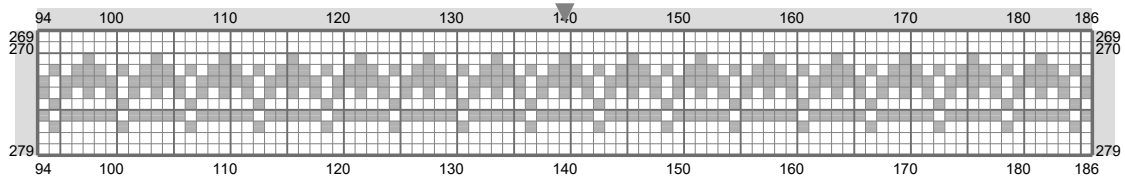
Large Biscornu, side 2

Copyright (C) 2018 Elise Nielsen



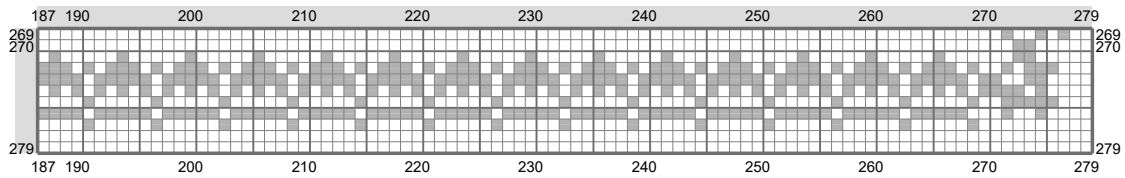
Large Biscornu, side 2

Copyright (C) 2018 Elise Nielsen



Large Biscornu, side 2

Copyright (C) 2018 Elise Nielsen



Stitch Count: 279w x 279h

Finished Size: 78.74 cm x 78.74 cm (18 ct./inch)





Cloth: Aida

Cloth's Color: White

of colors: 4 Colors

Color Table (DMC)

Cross Stitch

	E 415	(6300 ct)
	604	(2020 ct)
	3846	(3117 ct)
	3716	(672 ct)